

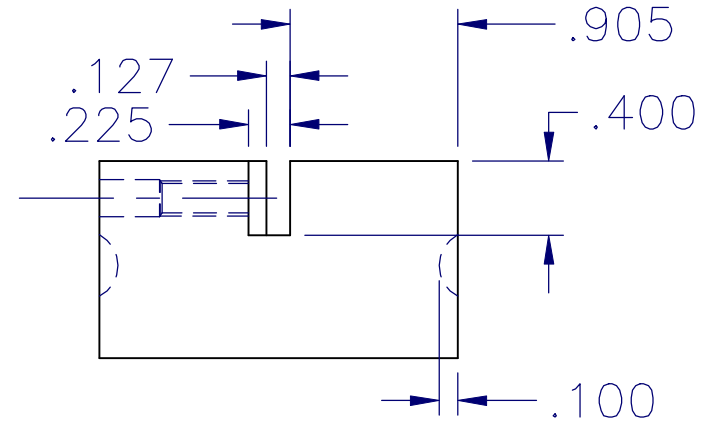
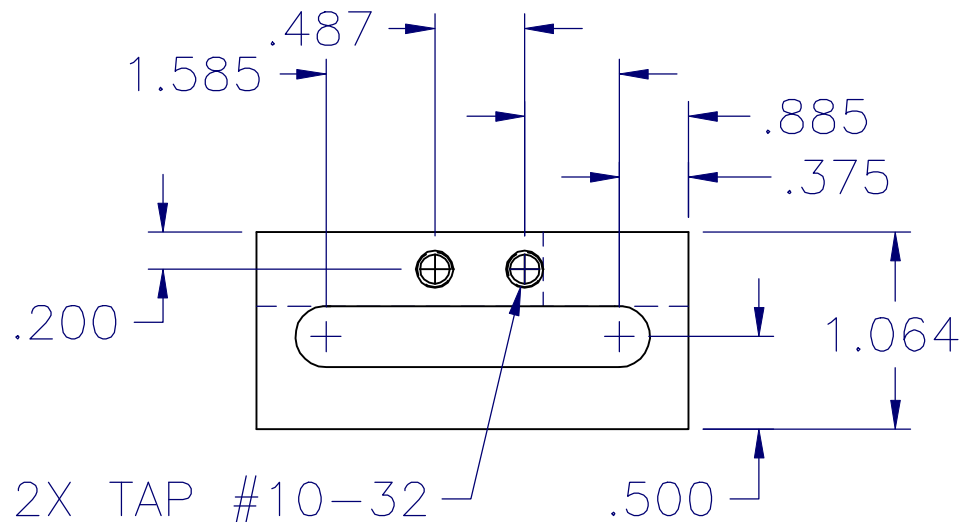
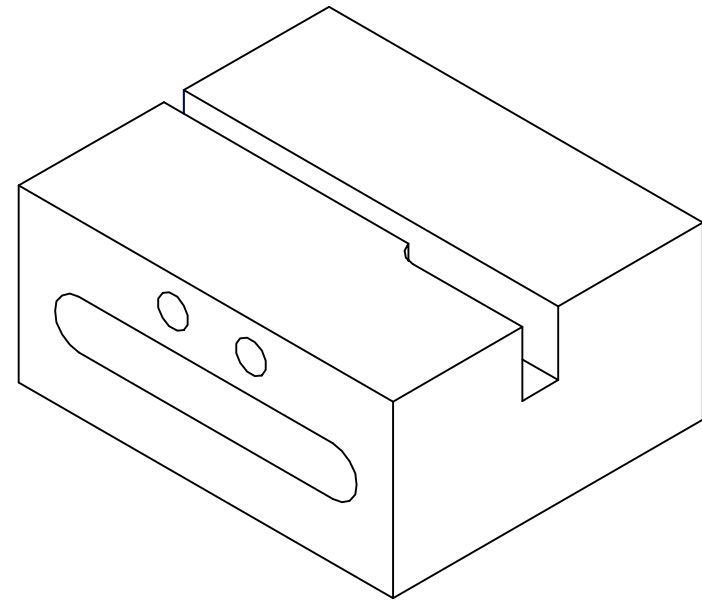
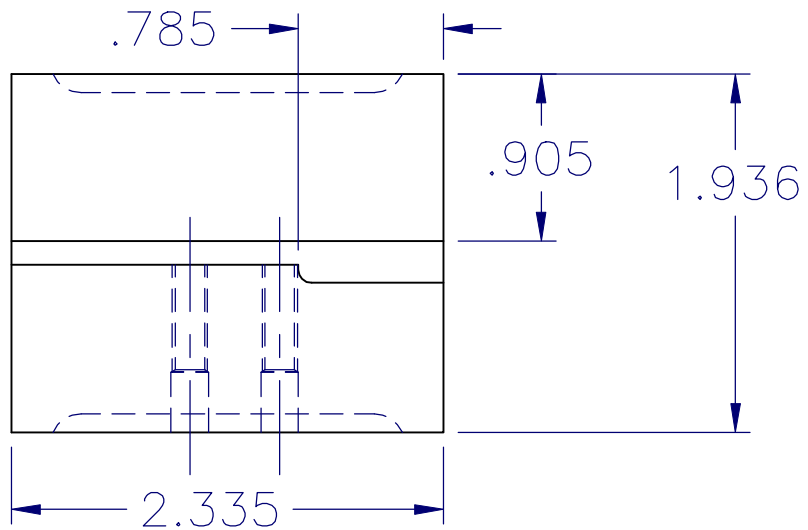
GENERAL ASSEMBLY — ISOMETRIC

NOTES:

1. DIMENSIONS ARE IN INCHES, UNLESS CALLED OUT OTHERWISE
2. STANDARD TOLERANCES:  
 .XX ±.01,  
 .XXX ±.005,  
 ANGLES ± .50,  
 BREAK EDGES .01,  
 FILLET INSIDE CORNERS .01 MAX.  
 SURFACE FINISH: √32
3. CLEAN SURFACES TO BE TREATED WITH ALCOHOL.
4. PC 1 WAS A LUMP OF OFFCUT, CLEANED UP TO DIMENSIONS SHOWN.  
 FLAT BAR 1 X 2 X 2.5 WOULD WORK NICELY.
5. SLOT IN PC-1 WAS CUT WITH A 1/8" SLITTING SAW IN THE MILL.  
 WIDE PORTION OF SLOT WAS REMOVED WITH AN 1/8" END MILL.
6. THE COUNTERBORE OF THE THREADED HOLES ALLOWS THE TAP SHANK TO PASS THROUGH, ALLOWING TAP TO REACH BOTTOM OF HOLE.
- 7 . THE CHAMFERED CORNER OF PC-2 PROVIDES CLEARANCE FOR INDICATOR DIAL.
8. THE 60 DEG. FLARE IN SLOT OF PC 2 ALLOWS A 1/8" END MILL TO REACH BOTTOM OF SLOT.
9. STORE PARTS BETWEEN USES WRAPPED IN COROSION INHIBITING PAPER.

1	6 INCH [150 MM]		STAINLESS STEEL	DIAL OR DIGITAL CALIPER	9
1	#8-32 X 3/16 PER DETAIL		STEEL, BLACK FINISH	SETSCREW	8
1	#6-32 X 3/4 "		STEEL, BLACK FINISH	SOCKET HD CAP SCREW	7
1	#8-32 X 5/16 PER DETAIL		BRASS	ROUND HEAD SCREW	6
1	#10-32 X .75"		STEEL, W/ BRASS INSERT	SETSCREW, BRASS POINT	5
1	.188" SQ X 1.25"	HSS	HSS TOOL BIT	SCRIBE POINT	4
1	.75 X .50 X 2.00"	1018	STEEL FLAT BAR	LEG	3
1	.75 X .50 X 1.50"	1018	STEEL FLAT BAR	ARM	2
1	2.0 X 2.0 X 1.13	1018	STEEL FLAT BAR	BASE	1
REQ'D	SIZE	SPEC	MATERIAL	DESCRIPTION	ITEM

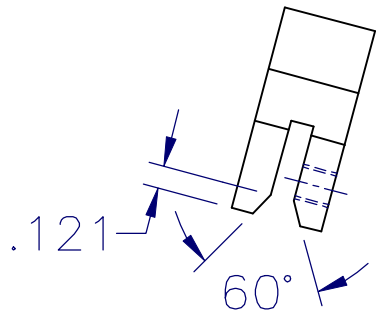
COMPONENTS AND MATERIALS REQUIRED FOR ONE ASSEMBLY



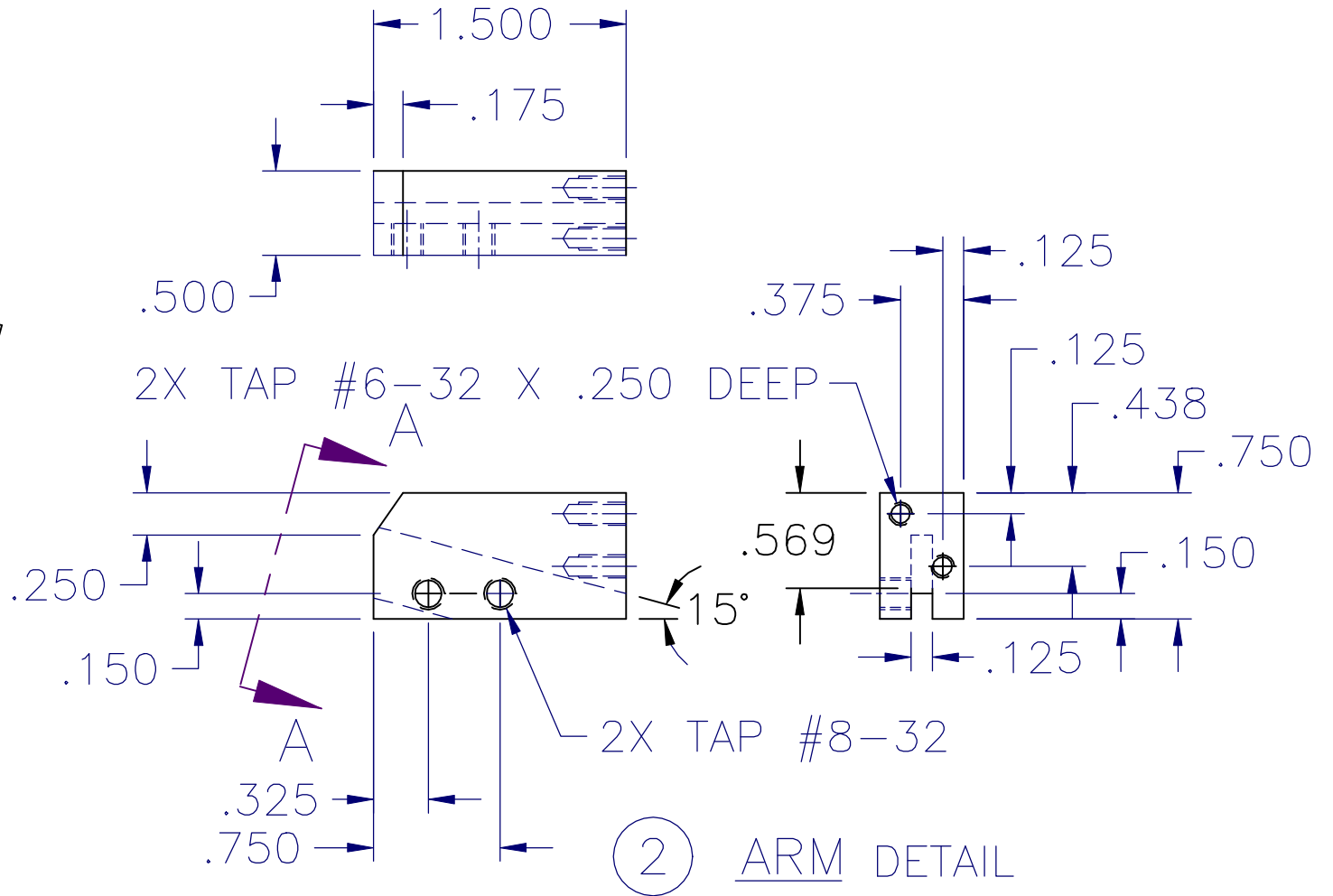
2X TAP #10-32  
 DRILL #21 (.159")  
 C-BORE  $\phi$ .201  
 X .313 DEEP (NOTE 6)

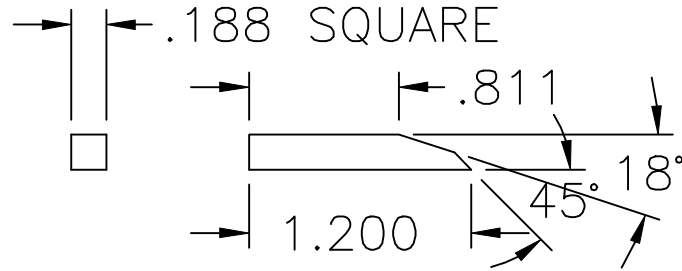
① BASE DETAIL

(NOTE 7)



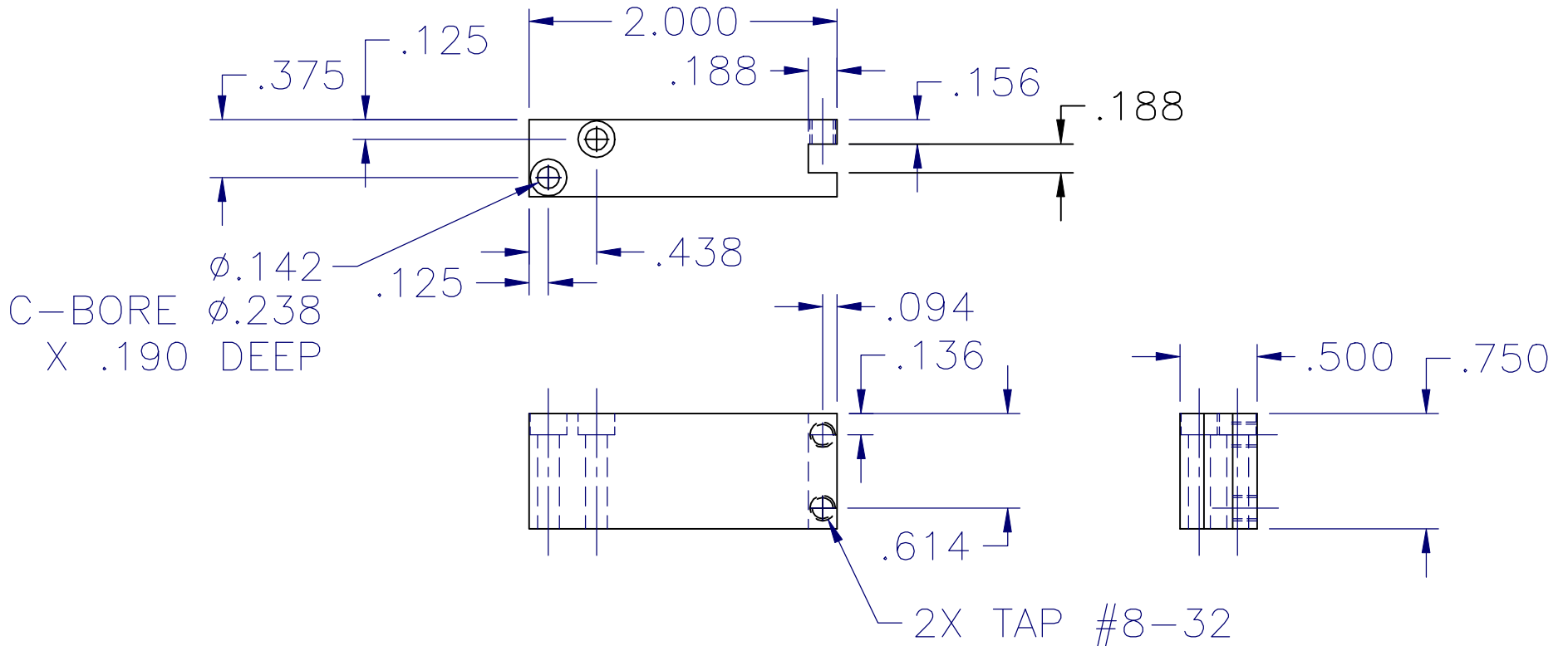
View A-A  
(NOTE 8)





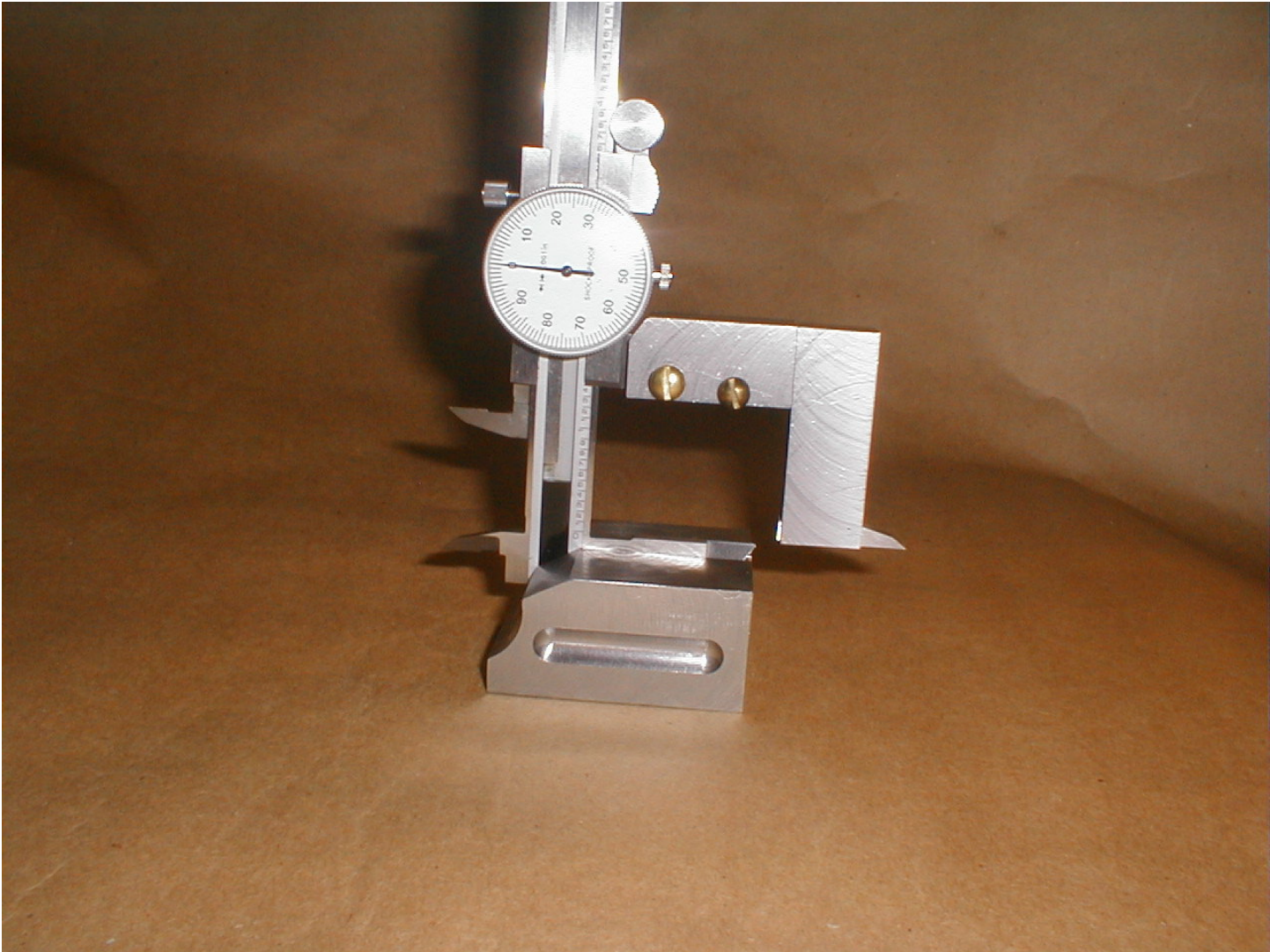
④ SCRIBE DETAIL  
 MAKE FROM  
 3/16" HSS TOOL BIT  
 HONE POINT SHARP

CAUTION!



③ LEG DETAIL









more pdf files available on

[www.toolsandmods.com](http://www.toolsandmods.com)

All ideas, procedures, modifications and whatever is described or shown here is to be used at risk of the reader.

Take care and work safely.