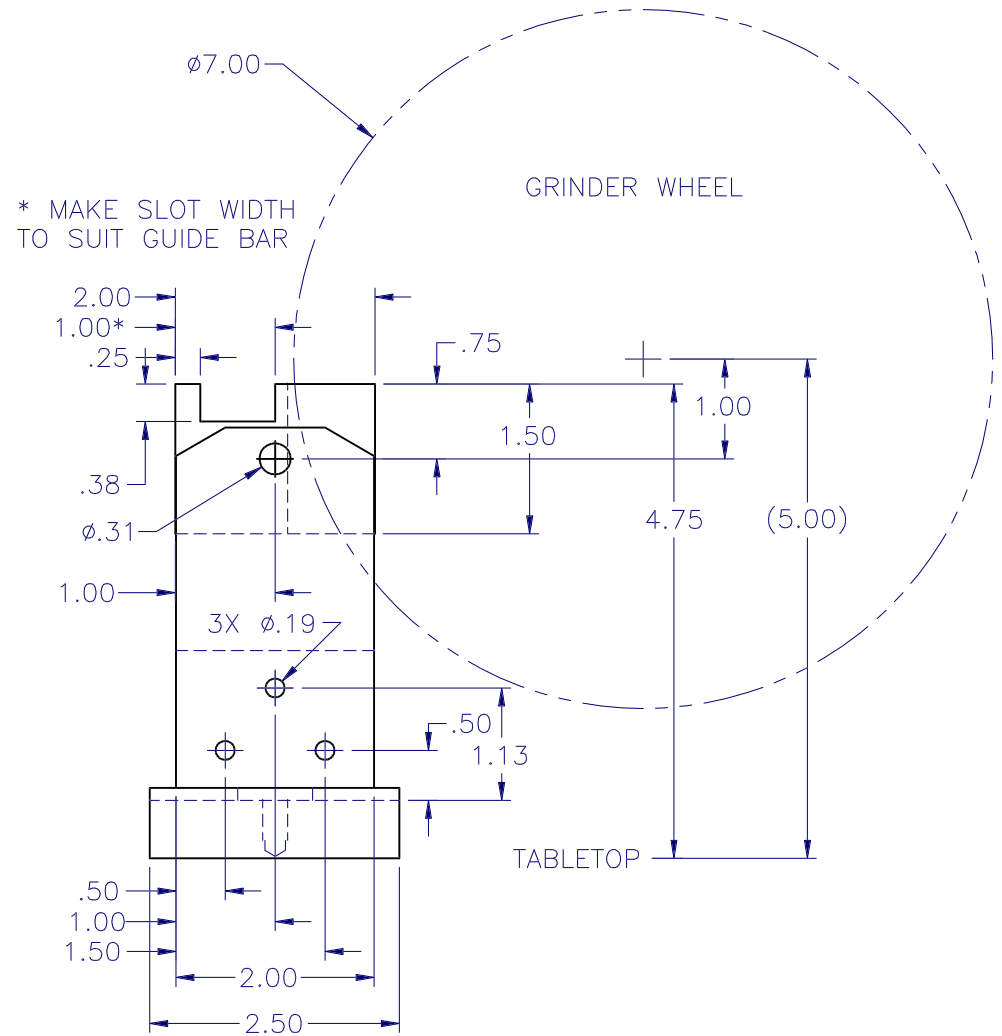
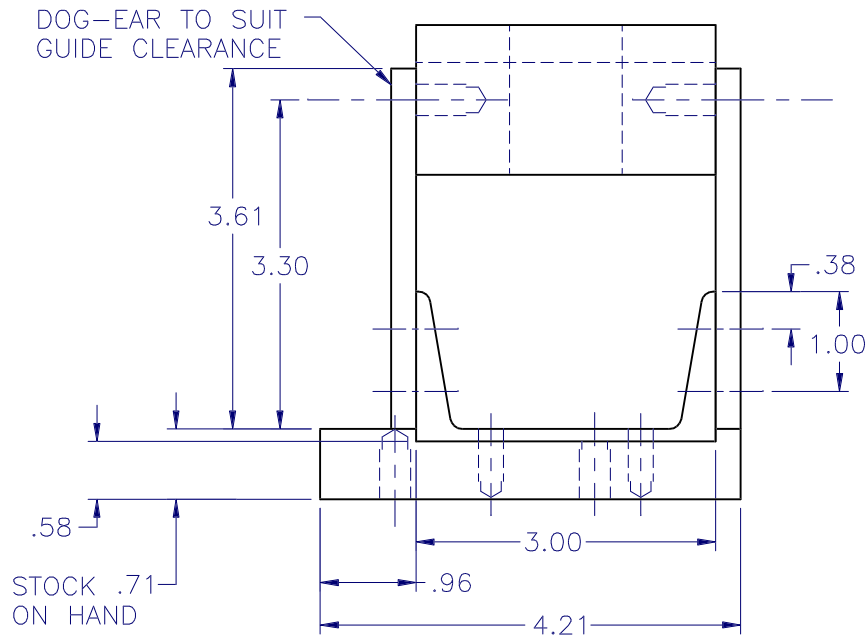
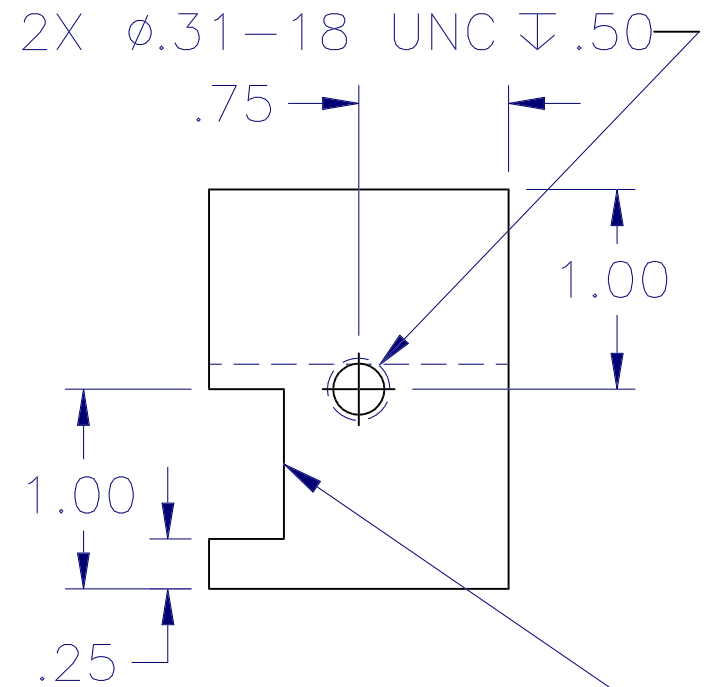
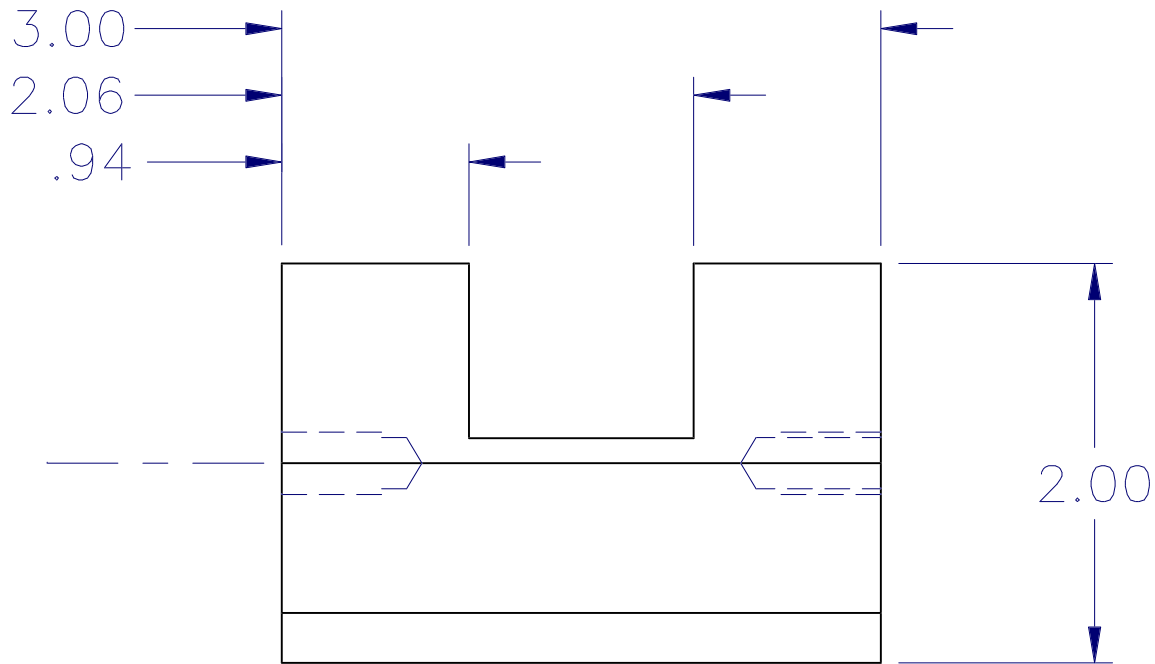
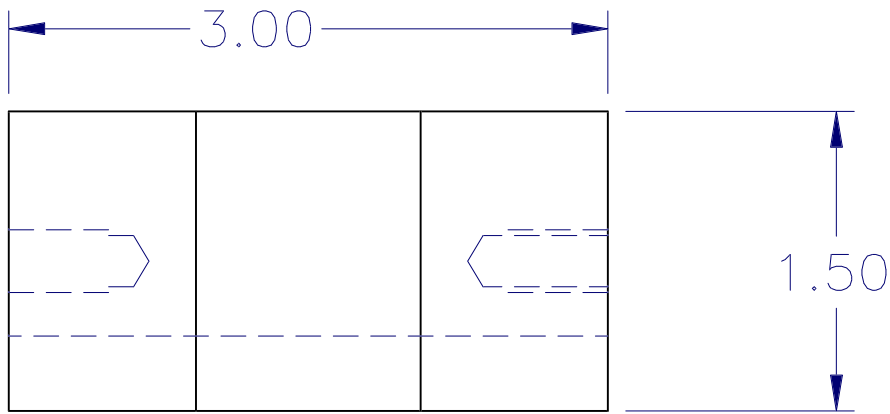


ASSEMBLY HARDWARE:

PIVOT SCREW: 2 EA SHCS .31-18 UNC X .75 W/FLAT WASHER  
 BASE ASSY: 2 EA SHCS .25-20 UNC X .75 W/FLAT WASHER  
 TABLE MOUNT: 2 EA SHCS .31-18 UNC X 1.25 W/FLAT WASHER

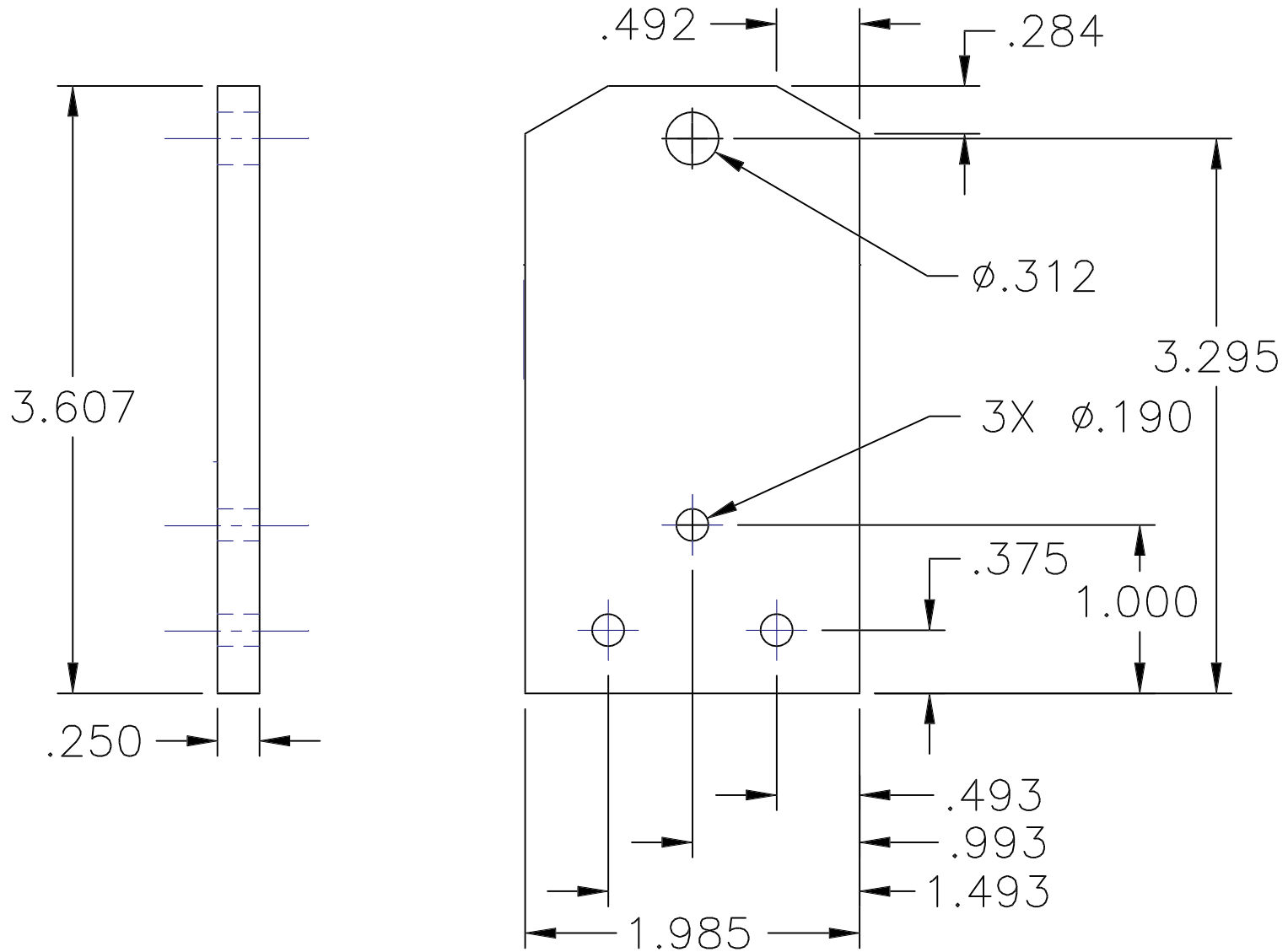


TOOL GRINDING REST  
 ASSY & DETAILS  
 MAT'L: 6061-T6 ALUMINUM  
 SCALE: 1:2

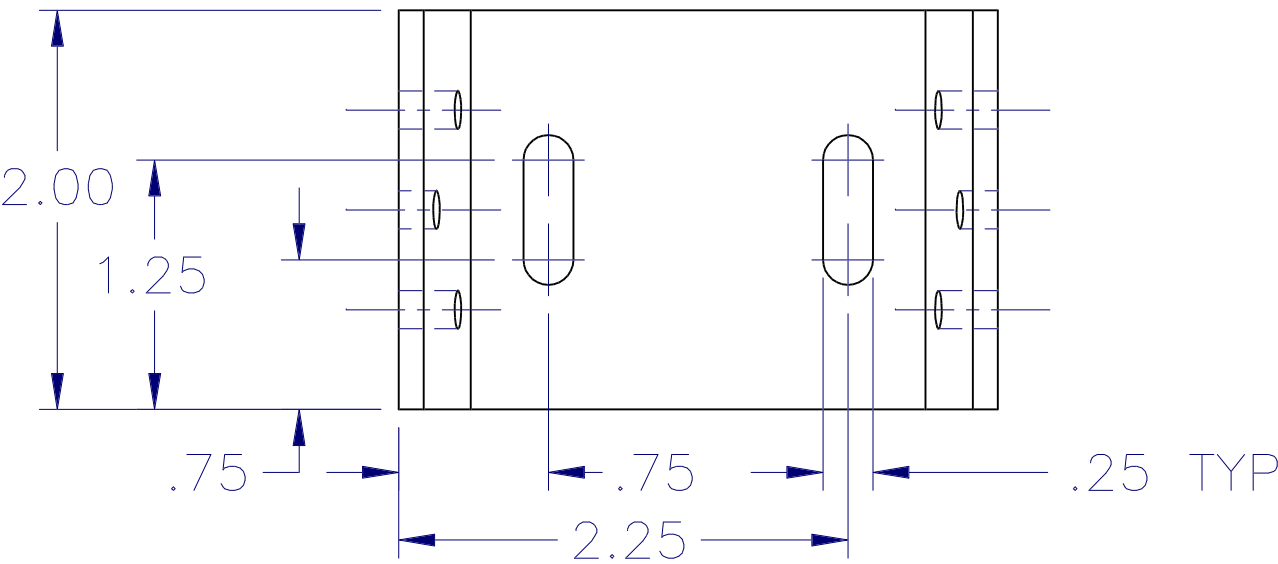


① TABLE  
ALUM 6061-T6

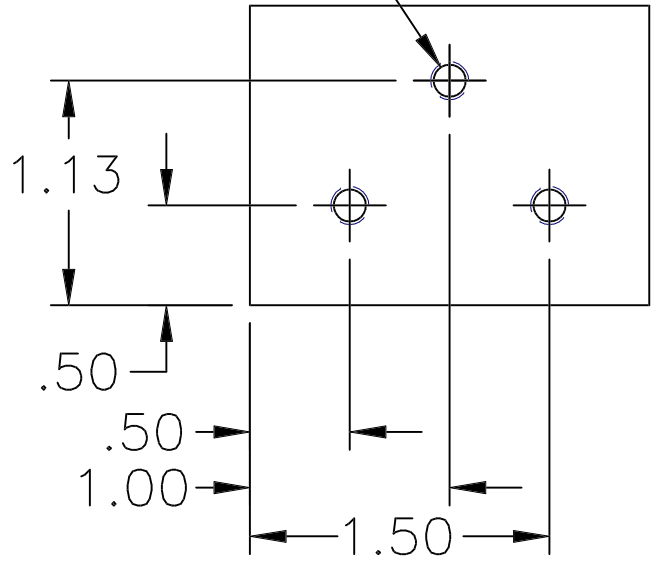
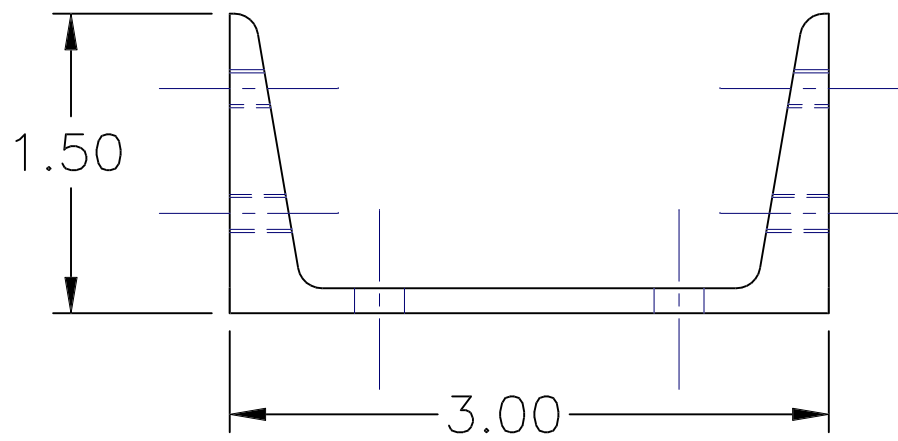
TEMPLATE SLOT  
TO PC ⑥



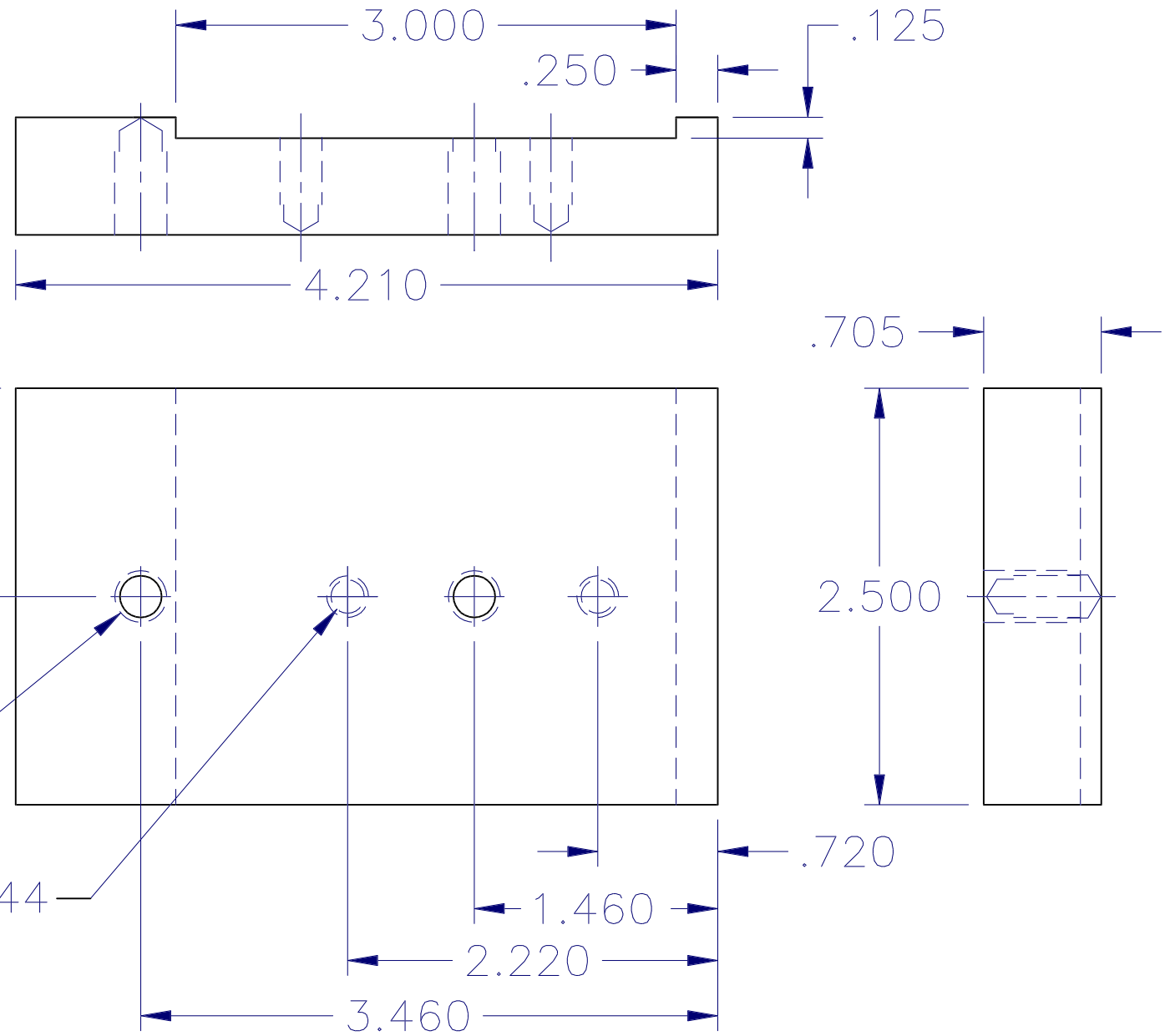
② SIDE PLATE  
ALUM 6061-T6



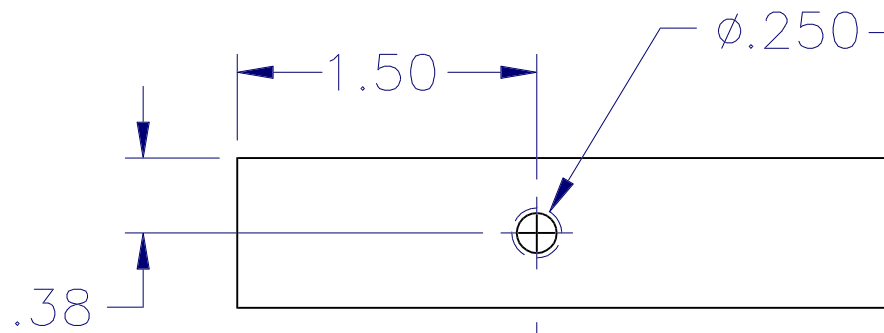
6X DRILL  $\phi$ .159  
TAP #10-32 UNF



③ BOTTOM  
ALUM 6061-T6

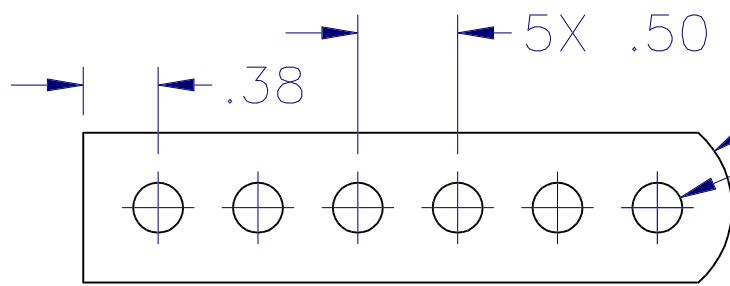
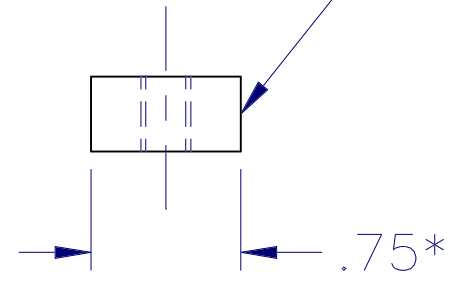
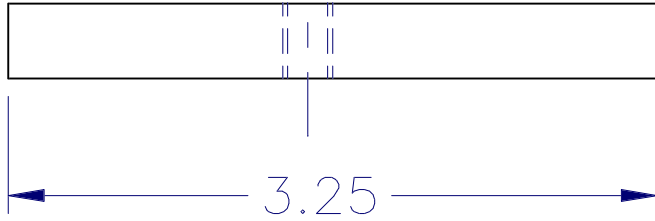


④ BASEPLATE  
ALUM 6061-T6

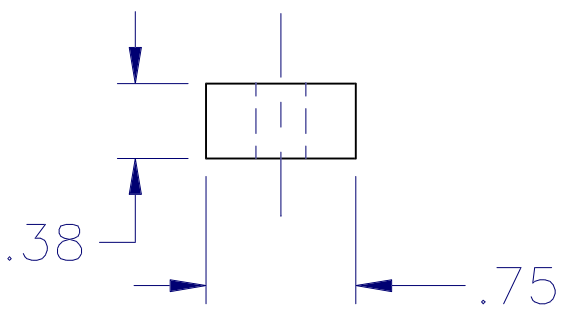
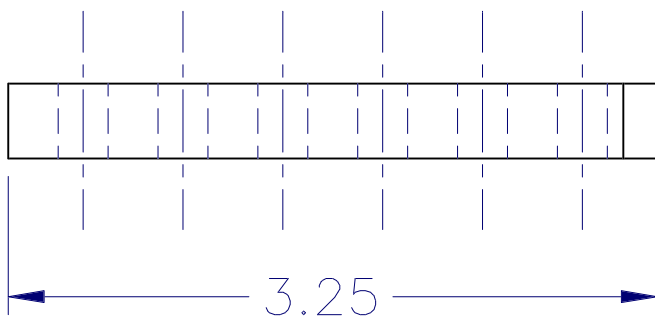


$\phi.250-20$  UNC

\* MACHINE EDGES TO BE  
FLAT, PARALLEL AND PLUMB  
(CRS BAR IS NOT SQUARE)



R.50  
6X  $\phi.25$   
CSK.  $\phi.28 \times 82^\circ$   
BOTH SIDES



⑤⑥ TOOL GUIDE

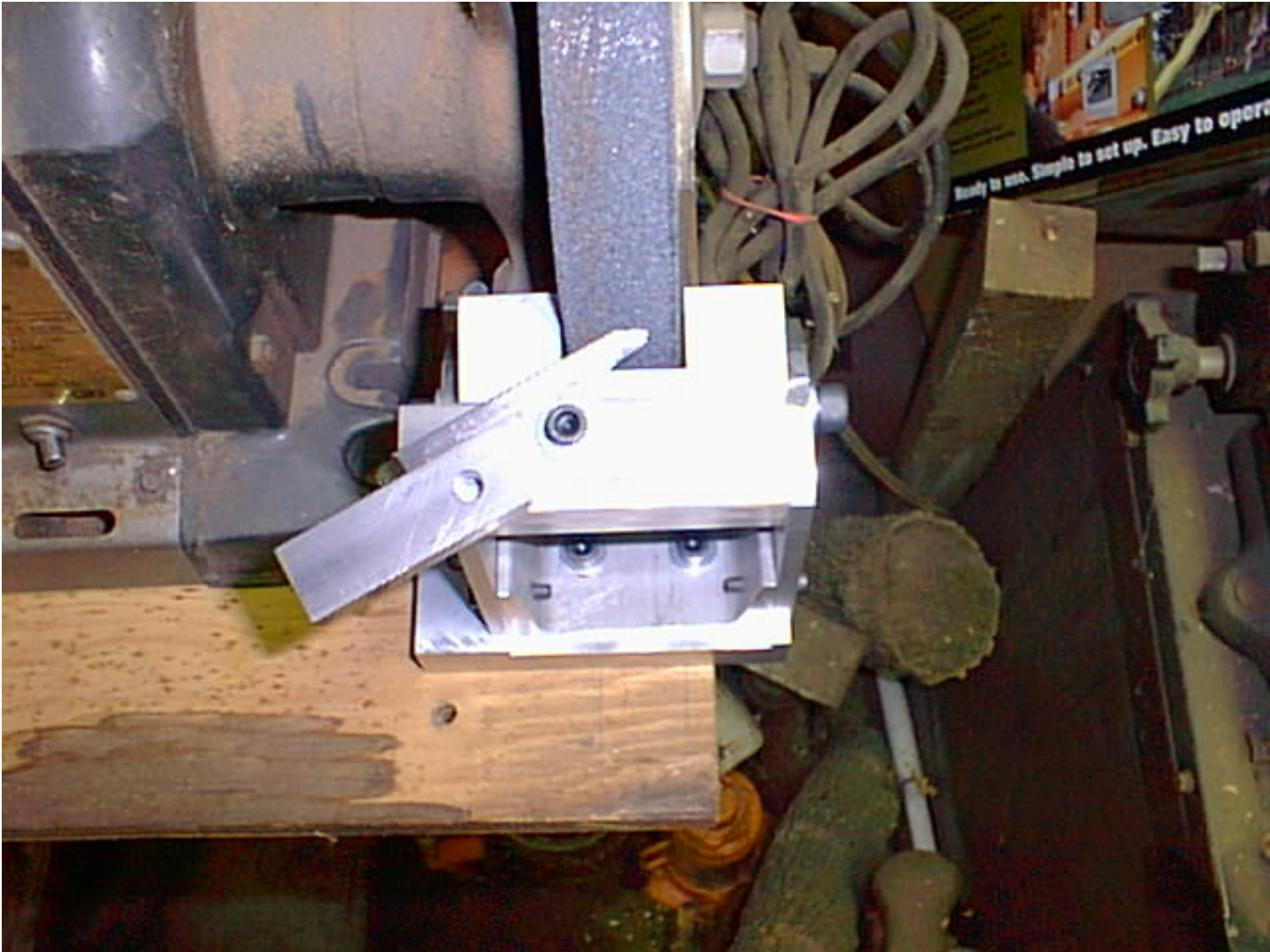
MATL: CRS FLAT BAR

MAKE 1 OF EACH











more pdf files available on

[www.toolsandmods.com](http://www.toolsandmods.com)

All ideas, procedures, modifications and whatever is described or shown here is to be used at risk of the reader.

Take care and work safely.