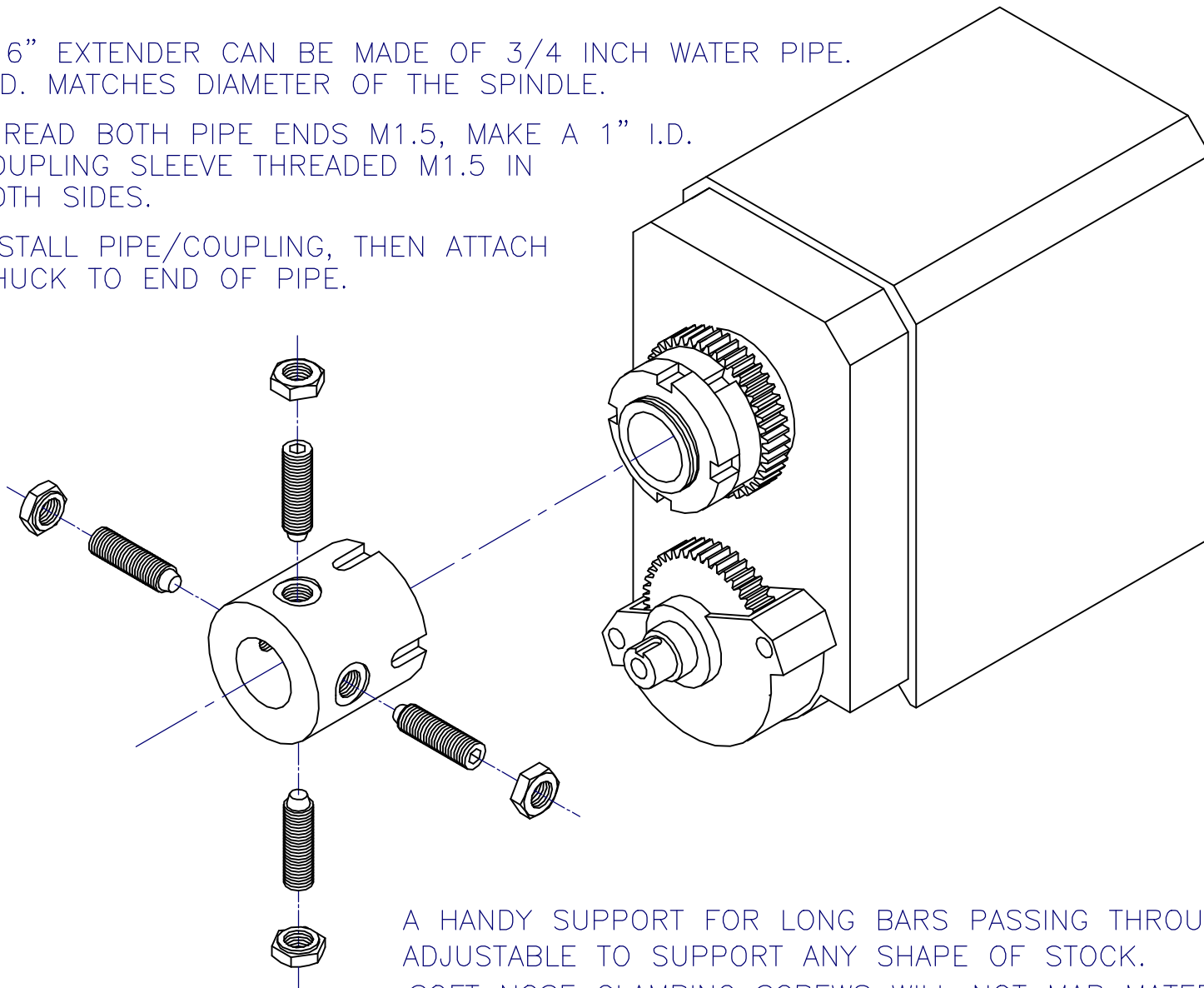


A 6" EXTENDER CAN BE MADE OF 3/4 INCH WATER PIPE.  
O.D. MATCHES DIAMETER OF THE SPINDLE.

THREAD BOTH PIPE ENDS M1.5, MAKE A 1" I.D.  
COUPLING SLEEVE THREADED M1.5 IN  
BOTH SIDES.

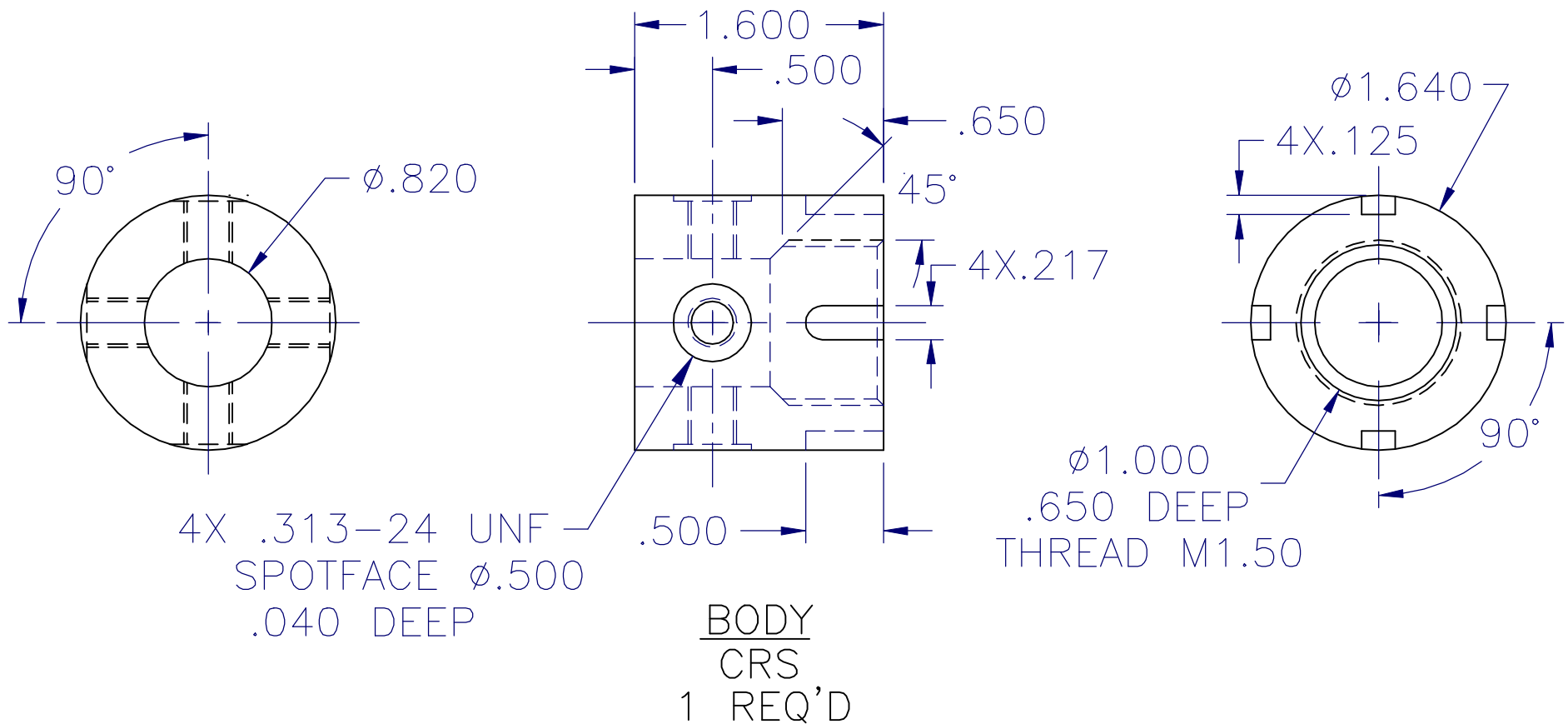
INSTALL PIPE/COUPLING, THEN ATTACH  
CHUCK TO END OF PIPE.



A HANDY SUPPORT FOR LONG BARS PASSING THROUGH THE HEADSTOCK.  
ADJUSTABLE TO SUPPORT ANY SHAPE OF STOCK.

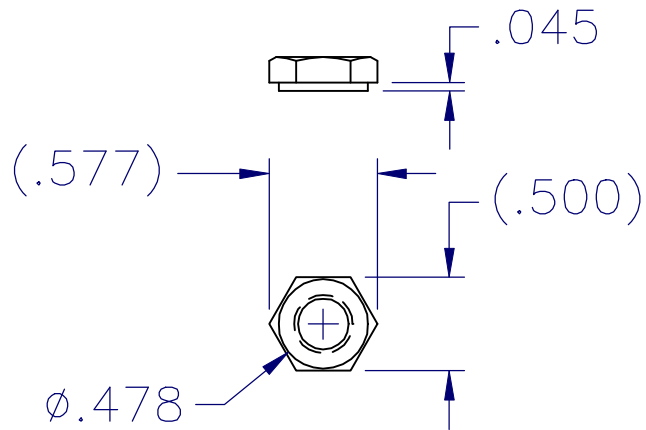
SOFT NOSE CLAMPING SCREWS WILL NOT MAR MATERIAL.

NOTE: BARS LONGER THAN 18 INCHES WILL REQUIRE ADDITIONAL SUPPORT BEHIND THE LATHE.

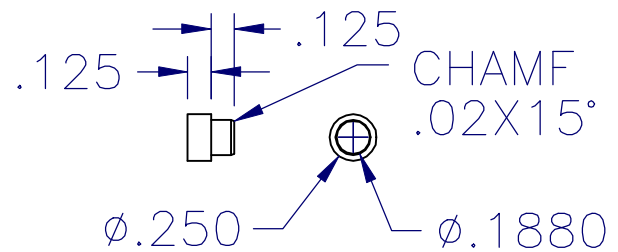


THIS CHUCK THREADS ON THE LEFT END OF THE LATHE SPINDLE TO SUPPORT LONG STOCK FOR TURNING.

USE WITH THE 4 EXPOSED SPINDLE THREADS, OR TO REPLACE THE OUTBOARD LOCKNUT.

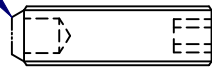


LOCKNUT 5/16-24  
 MODIFICATION  
 4 REQ'D



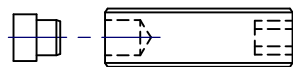
INSERT  
 BRASS  
 4 REQ'D

REMOVE CUP POINT  
DRILL  $\phi$ .1875 .188 DEEP

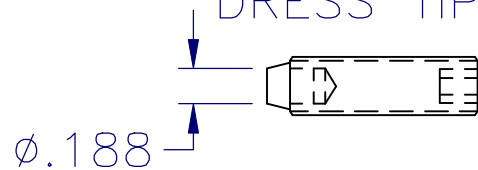


5/32 HEX SOCKET (REF)

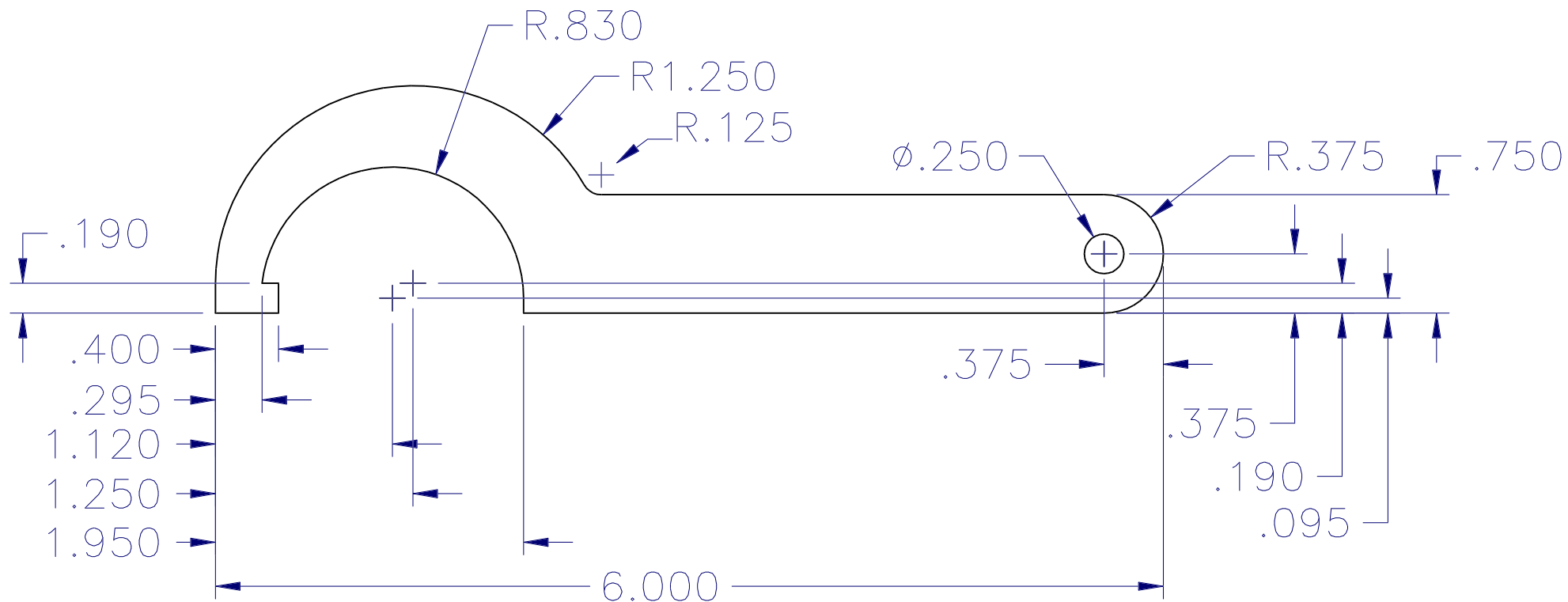
PRESS INSERT INTO SETSCREW



DRESS TIP CONCENTRIC W/ SETSCREW



SETSCREW 5/16-24 X 1.00  
MODIFICATION  
4 REQ'D



## Detail — Hook Spanner

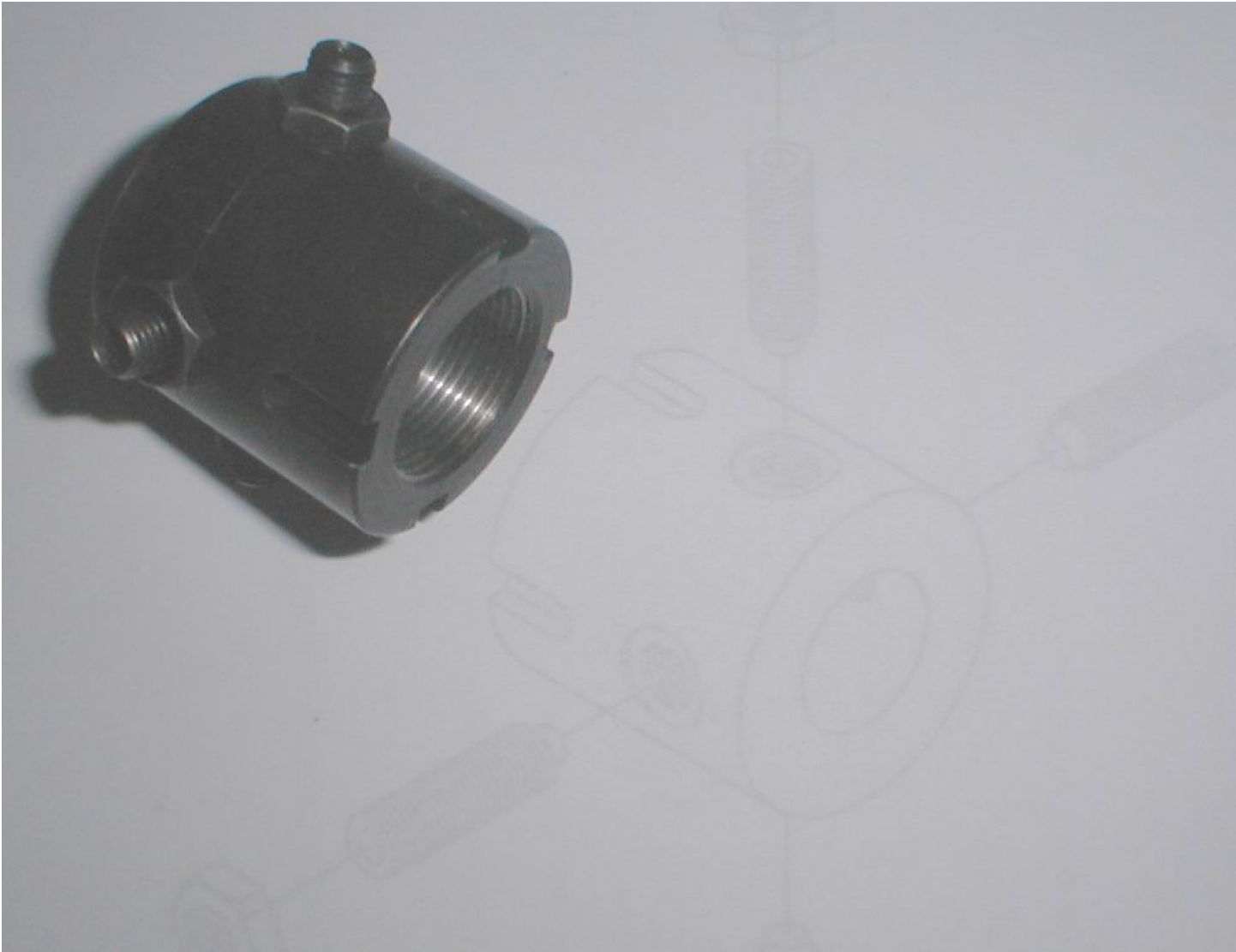
(for 7x\*\* Minilathe Spindle Nuts)

Mat'l: Mild Steel Flat Bar 1/8" to 1/4" x 1-1/2 x 6"

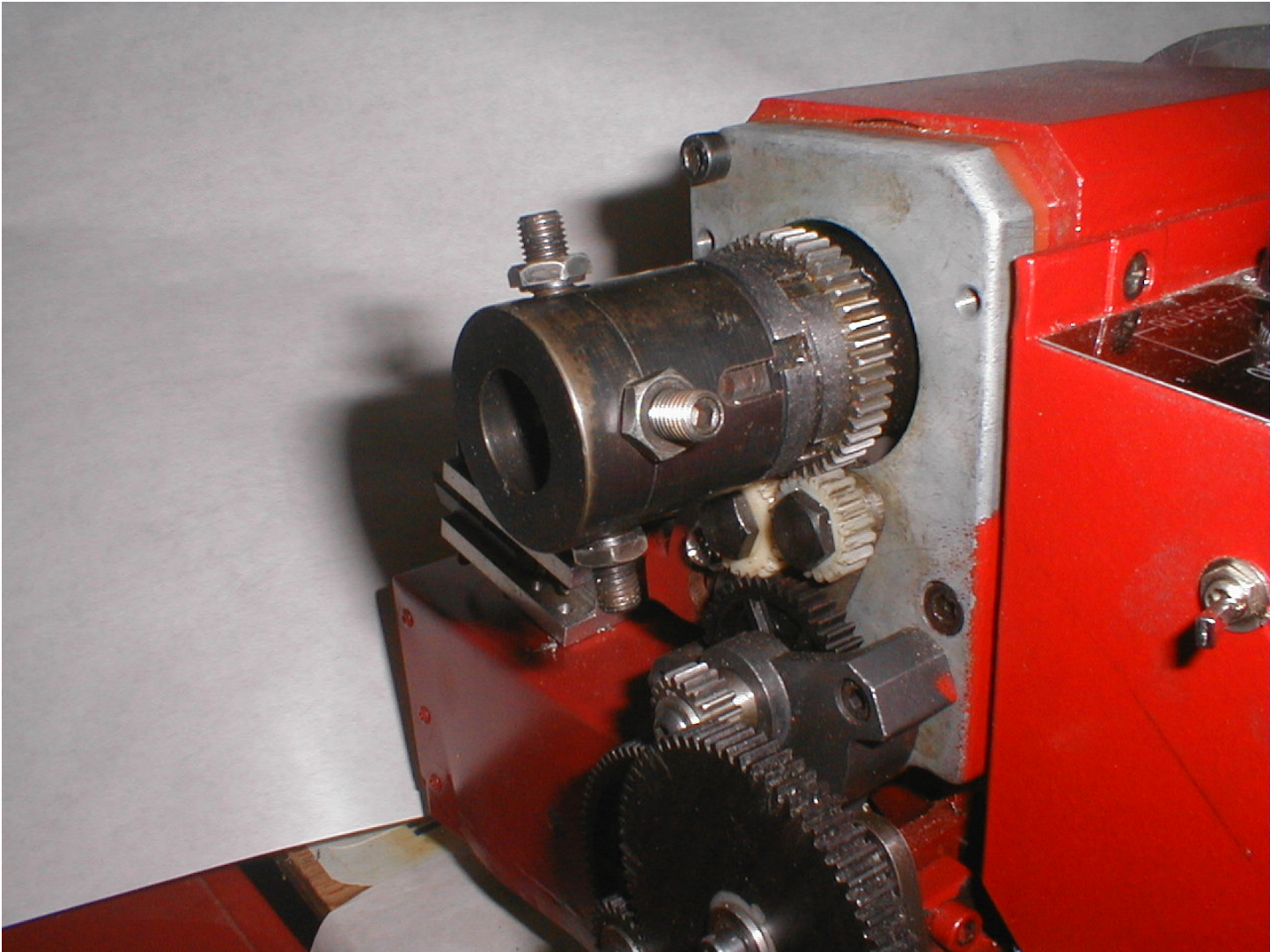
Required — 2

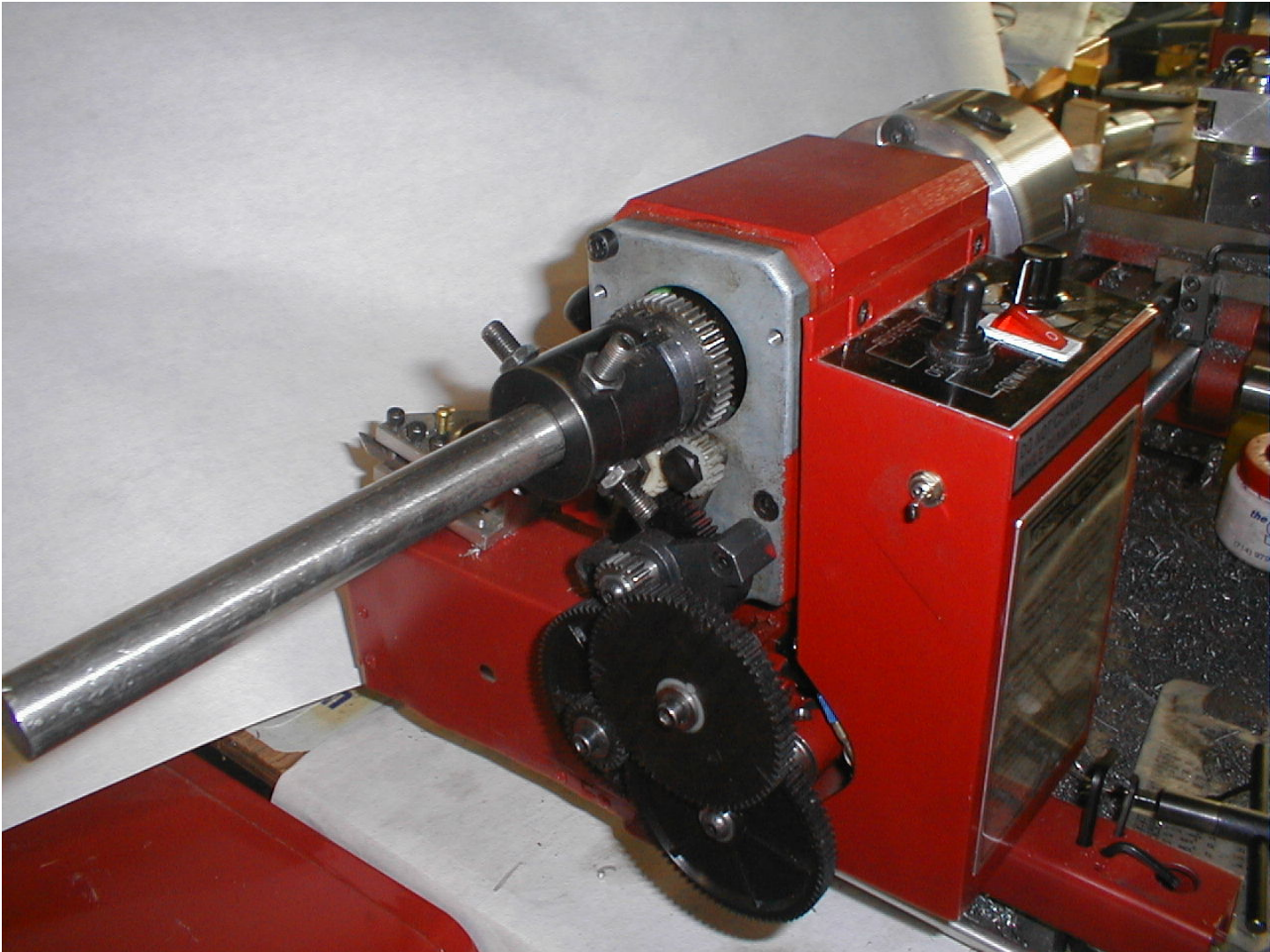
















more pdf files available on

[www.toolsandmods.com](http://www.toolsandmods.com)

All ideas, procedures, modifications and whatever is described or shown here is to be used at risk of the reader.

Take care and work safely.